



Modular Engine

# 10 LED LIGHT ENGINE

## FEATURE

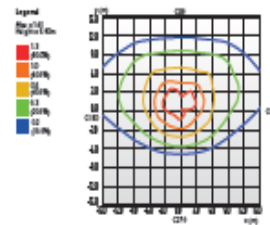
- 고효율 / 표준형
- 외부환경에 대한 강한 내구성
- 장수명

## BENEFITS / APPLICATIONS

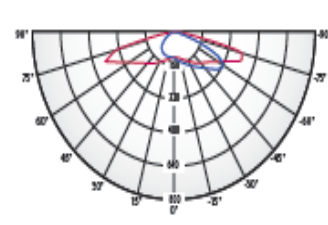
- 터널등
- 가로등
- 고천장등

### Tunnel Light Asymmetric

Isolux Diagram

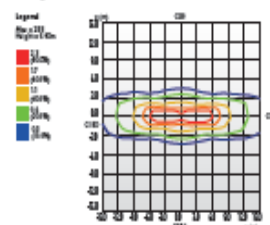


Luminance Intensity Distribution

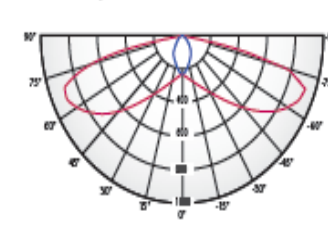


### Street Light Type I

Isolux Diagram

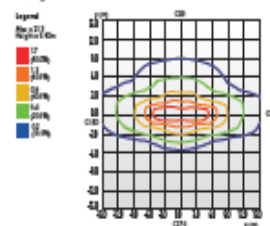


Luminance Intensity Distribution

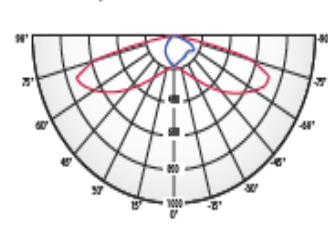


### Street Light Type II

Isolux Diagram

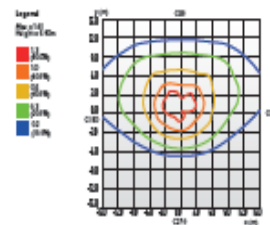


Luminance Intensity Distribution

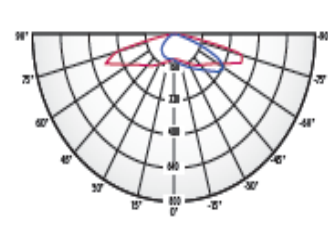


### Street Light Type III

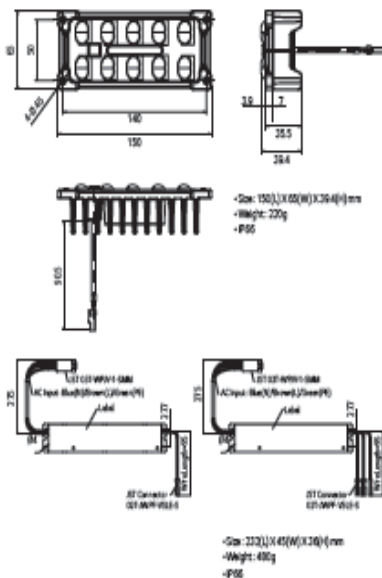
Isolux Diagram



Luminance Intensity Distribution



Dimensions (Unit : mm)



### Light Module

| Type                    | Model Name  | Power Consumption (W) | Total Light Flux (lm) | CCT (K) | CR | Efficacy (lm/W) | ILED (mA) |
|-------------------------|-------------|-----------------------|-----------------------|---------|----|-----------------|-----------|
| Tunnel Light Asymmetric | NM257ASZ15  | 21.2                  | 2,460                 | 5,700   | 70 | 114             | 700       |
| Street Light Type I     | SM2157T1Z00 | 21.2                  | 2,460                 | 5,700   | 70 | 114             | 700       |
| Street Light Type II    | SM2157T2Z00 | 21.2                  | 2,460                 | 5,700   | 70 | 114             | 700       |
| Street Light Type III   | SM2157T3Z00 | 21.2                  | 2,460                 | 5,700   | 70 | 114             | 700       |

### Driver

| Model Name | Power Consumption (W) | Input Voltage (V) | Output Voltage (V) | Output current (mA) | Efficacy (lm/W) | Note      |
|------------|-----------------------|-------------------|--------------------|---------------------|-----------------|-----------|
| SC2510FC   | 25                    | 100-240           | 30                 | 0.7                 | 87              | IC, 0-10V |
| SC7510FC   | 75                    | 100-240           | 30                 | 2.1                 | 89              | IC, 0-10V |

